

One voice, so children, families and communities thrive.

ALIGN provided support to 120-member agencies, 10,000 agency staff and 202,000 children and families in 2016-17.

During 2016 – 2017 ALIGN maintained its commitment to our members through many continuing and new initiatives. The following examples illustrate different ways we supported our members.

- We welcomed Bruce Armson as our new President
- We welcomed two new contractors, Cathy Mitchell and Nicole McFadyen
- In November, our annual member survey revealed:
 - the number of agencies considering a program rose to 43% up from 27% the previous year
 - the turnover rate for ALIGN member agency staff was 34.5%
 - family or life events and personal/job-related challenges are increasingly being reported as reasons for staff turnover
 - 76% of member agencies participated in ALIGN-sponsored training events
 - 86% of members say they receive adequate information from ALIGN
- Developed procurement process and contracting templates with government
- Together with the Alberta Foster Parent Association, published "The Pathway to Better Mental Health" a resource for caregivers
- Hosted a one-day symposium in January on "Mental Wellness for Children and Youth in Care: Support for the Caregiver"
- Published a special issue of the Journal, "From Theory to Practice Residential Care for Children and Youth"
- Chaired the Youth in Care Mentoring Project and presented at the National Mentoring in November
- Awarded one academic bursary and three agency bursaries leading to an overall total of 153 individual and 43 agency bursaries.
- Hosted ALIGN's ninth annual conference in January 2017.

ALIGN met with members this year to solicit input to our strategic directions for the next five years.

MISSION

One voice, so children, families and communities thrive.

ALIGN VALUES

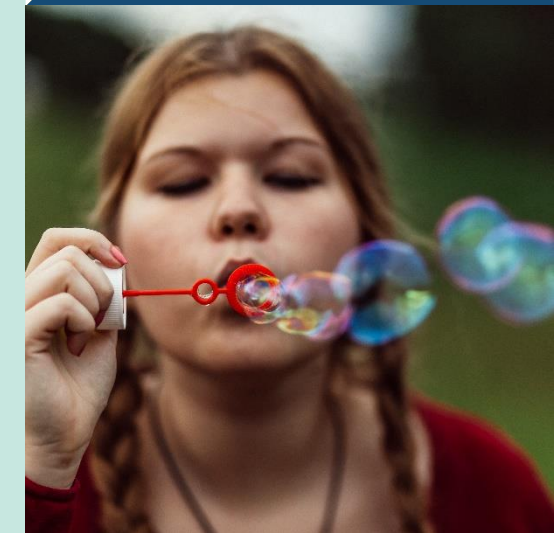
Excellence
Respect
Collective
Ethical and Accountable
Courage
Commitment

STRATEGIC PRIORITIES

Organizational sustainability
Excellence in professional development and research
Align indigenous strategy
Workforce strategy for healthy, sustainable, competent service providers
Leadership with Government

ALIGN BELIEFS

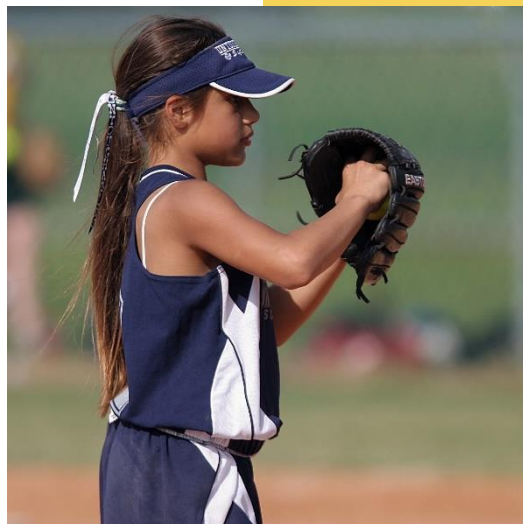
- We believe children and families must live in safe, secure, healthy, stable and nurturing environments.
- We believe all families and communities have the strengths and capacities to grow and change.
- We believe each child and family must be provided the opportunity to maximize their potential.
- We believe that children and families should have services based on the best knowledge, practices and wisdom.
- We believe in respect for the diversity, values and dignity of all people.



"We are a collection of allies – a unified community of agencies representing the diverse needs of Alberta's children and families. ALIGN is proud to champion the work of our frontline service providers and to support our members. Together we are stronger."

ALIGN's 2016-17 Year End Financial Position

VKO LLP CHARTERED PROFESSIONAL ACCOUNTANTS have conducted an independent audit of ALIGN's 2016-17 financial records. Copies of the audited statements are available on request.





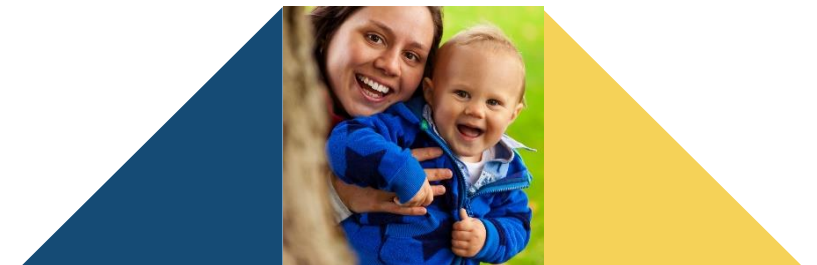
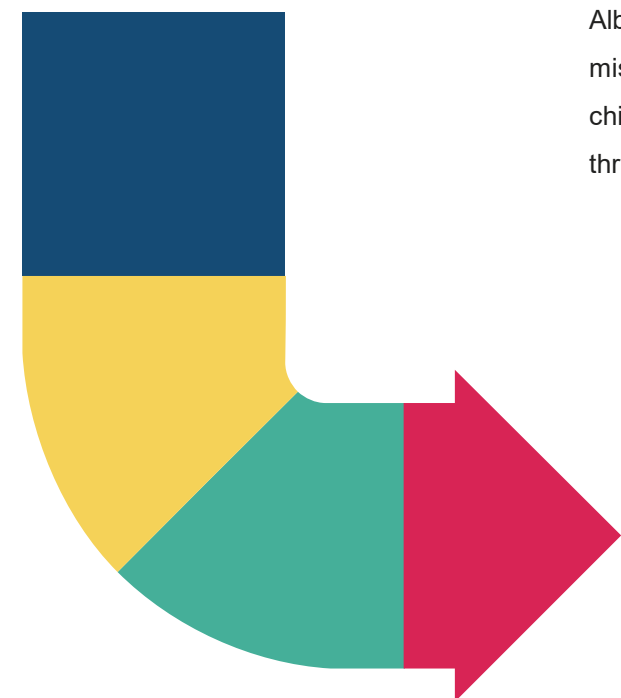
ALIGN is a network of child and family service agencies, all committed to improving the quality of life for Alberta's most vulnerable children and families. ALIGN promotes research and continuing learning for over 10,000 agency staff across the province while also ensuring policy-makers at all levels of government understand the issues facing Alberta's children and families. Our mission is to speak with one voice so children, families and communities thrive.



ALIGN
Association of
Community Services

Suite 255
BONNIE DOON MALL
8330 82 AVENUE
EDMONTON, AB

www.alignab.ca



ALIGN
Association of Community Services

Together for Children and Families



2016 - 2017 Annual Report



- PROFESSIONAL DEVELOPMENT
- ADVOCACY WITH GOVERNMENT
- PROMOTER OF RESEARCH EXCELLENCE
- HEALTHY WORKFORCE

