

Together for  
children and  
families.



**ALIGN**  
Association of Community Services

- INFORMING POLICY AND PRACTICE
- PROFESSIONAL DEVELOPMENT
- SERVICE EXCELLENCE
- HEALTHY WORKFORCE



ALIGN, is a network of child and family service agencies, all committed to improving the quality of life for Alberta's most vulnerable children and families. ALIGN promotes research and continuous learning for over 10,000 agency staff across the province, while also ensuring policy-makers at all levels of government understand the issues facing Alberta's children and families.

## OUR MEMBERS

ALIGN Association of Community Services (formerly Alberta Association of Services to Children and Families) is a membership-based, nonprofit organization supported by over 120 members throughout the province. Approximately 80% of the contracts government arranges with front-line child intervention and disability services each year are with ALIGN's member agencies. Our members employ 10,000 staff and provide services to over 202,000 vulnerable children and families each year.

## MISSION AND VALUES

Together with our members, ALIGN's mission is:

*"to speak with one voice, so children, families and communities thrive."*

ALIGN's values are:

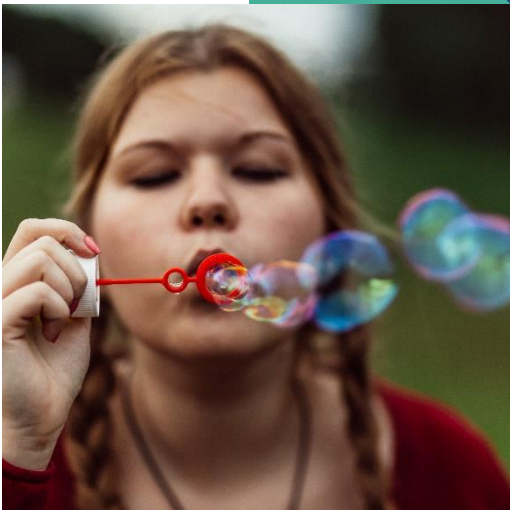
EXCELLENCE    RESPECT    INTEGRITY    COMMITMENT    COURAGE  
COLLECTIVITY    ETHICAL AND ACCOUNTABLE SERVICE

## STAFF

ALIGN operates with a small centralized group of three staff including the Executive Director, Office Manager and Webmaster. Additional supports are provided by three contract staff; two Practice Contractors and a Communications Specialist.

## IMPACT

Over ALIGN's 50-year history the organization has championed the development of standards for residential and community services, influenced local, regional and provincial social policy decisions and advocated on behalf of both service providers and Alberta's most vulnerable children and families.



**Providing support and representation on behalf of our members is our top priority. The following examples illustrate how ALIGN achieves its mandate.**

### **COLLECTIVE VOICE**

We are one voice – a collective that promotes the essential services our members provide. With a shared vision, we advocate for the causes and issues that directly affect our members and the children and families of Alberta.

### **KNOWLEDGE TRANSFER**

ALIGN works to continually build the capacity of its' member by hosting a wide range of high caliber professional development events each year. From front line practice to executive leadership, ALIGN works with local academic leaders as well as national and international experts to provide members with access to the best training resources available.

### **ADVOCACY WITH GOVERNMENT**

ALIGN ensures the voice of the sector is at the table whenever government convenes to develop policy, procedure and legislation. As a respected partner, ALIGN is often called upon by government, academia and other organizations to share its' collective knowledge and experience.

### **INCLUSIVE SERVICE**

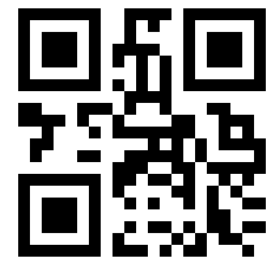
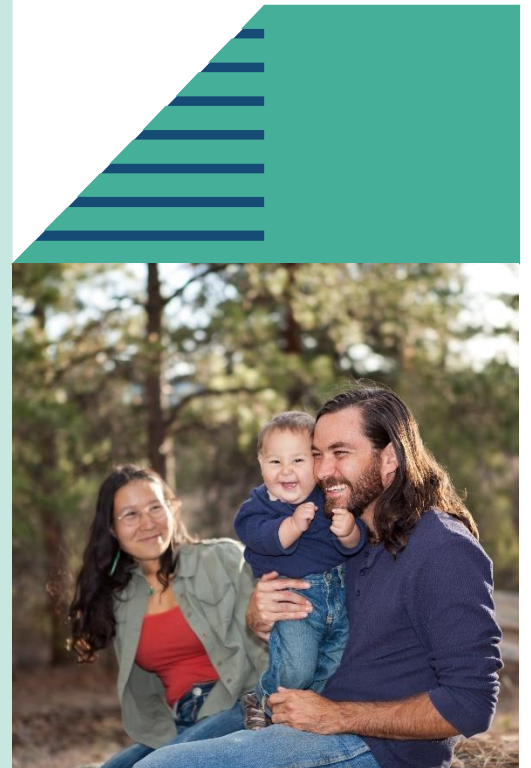
ALIGN regularly convenes Indigenous, and other advisory groups, to ensure current research and best practices for all Alberta children and families are made available through ALIGN's training, resources and other special initiatives.

### **RESOURCES**

ALIGN brings the latest sector news and research to the desktop of its' members three times a month through an electronic resource bulletin. ALIGN also issues a research journal twice a year and has an active social media presence. With the utmost respect for transparency, ALIGN regularly posts meeting minutes, letters and other documentation so members are aware of how ALIGN represents them in the community.

### **BURSARIES**

Since 2007, ALIGN has administered a Leadership Bursary program on behalf of the Government of Alberta. The bursaries support individual and agency leadership opportunities. Evaluations have shown that bursary recipients demonstrate increased confidence and a higher rate of retention.



**Visit ALIGN's website for a comprehensive look at the benefits of joining ALIGN.**



Suite 255, BONNIE DOON MALL  
8330 82 AVENUE  
EDMONTON, AB

TEL: (780) 428-3660  
FAX: (780) 428-3844  
EMAIL: [info@alignab.ca](mailto:info@alignab.ca)

[www.alignab.ca](http://www.alignab.ca)  
Twitter: @alignalberta



*We are a collection of allies - a unified community of agencies representing the diverse needs of Alberta's children and families. ALIGN is proud to champion the work of our frontline service providers and to support our members. Together, we are stronger.*