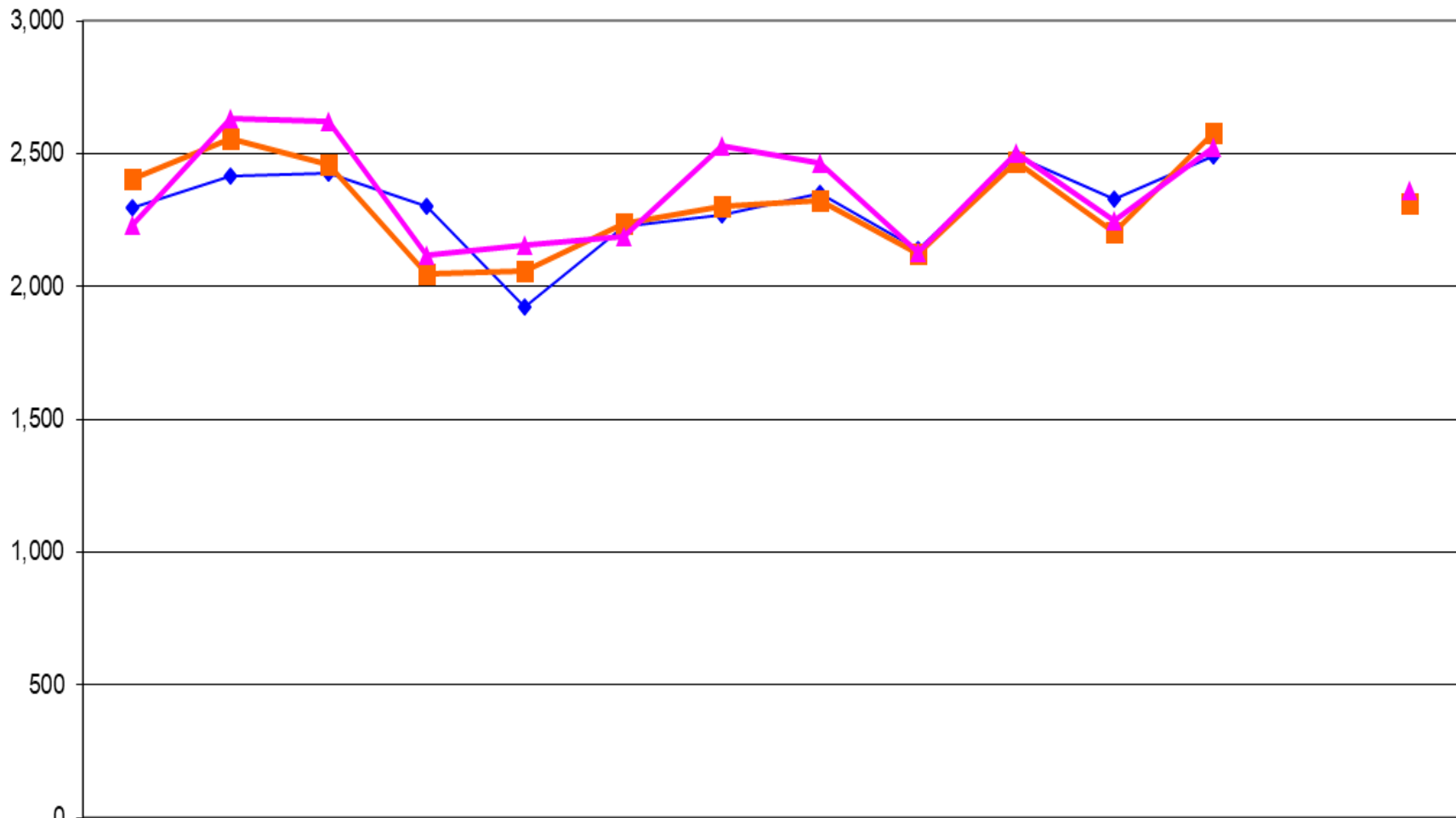


Child and Family Service (CFS) Regions  
Caseload Trends  
2015-16 to 2017-18

Presentation to ALIGN

May 2018

Intakes Started (Case Count)  
CFS Regions  
2015/16 to 2017/18

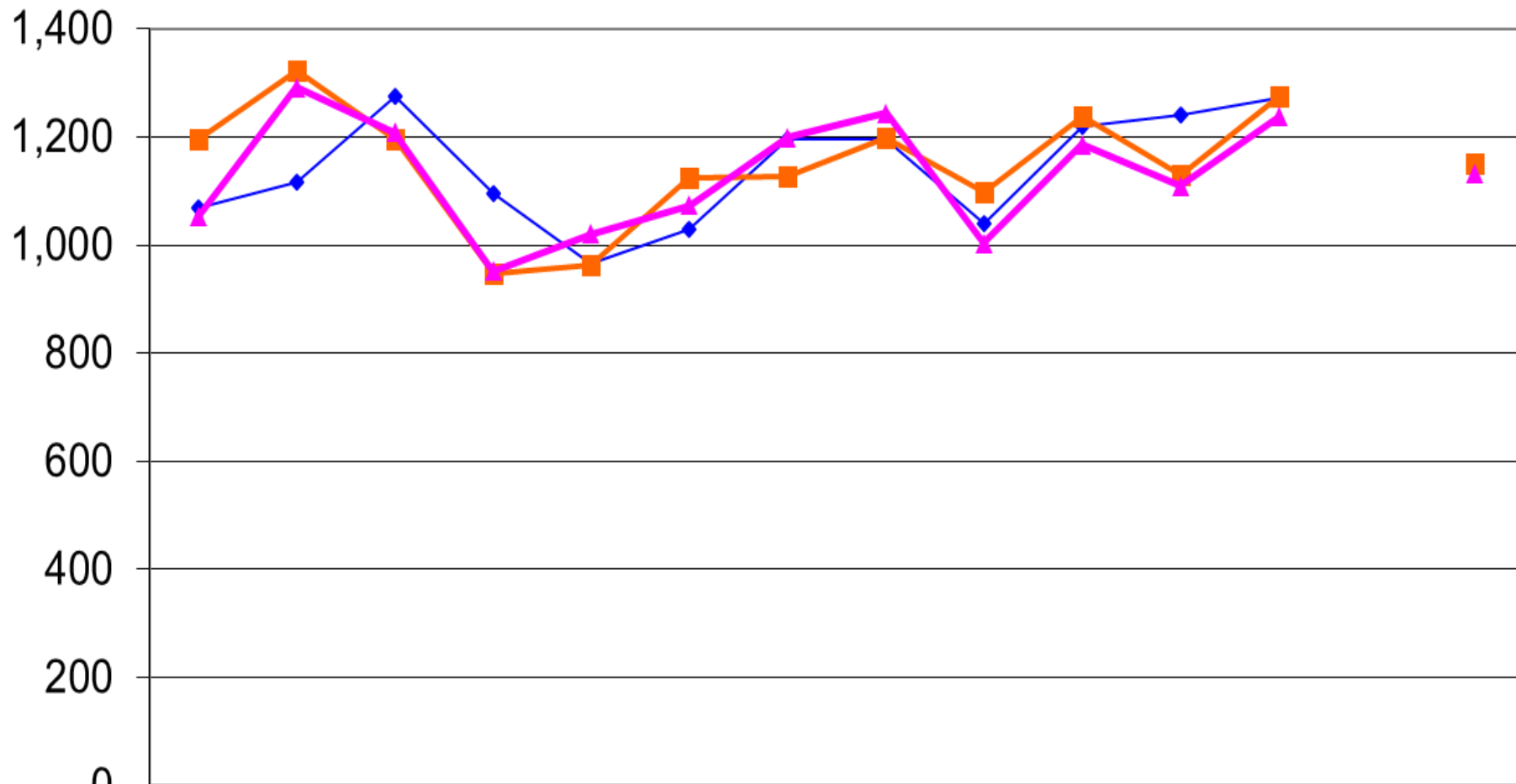


◆ 2015/16	2,298	2,417	2,428	2,302	1,924	2,224	2,267	2,351	2,138	2,492	2,331	2,491		2,305
■ 2016/17	2,407	2,557	2,459	2,048	2,060	2,239	2,304	2,323	2,123	2,469	2,207	2,579		2,315
▲ 2017/18	2,232	2,633	2,620	2,117	2,154	2,191	2,531	2,465	2,131	2,504	2,248	2,523		2,362

# Investigations Started (Case Count)

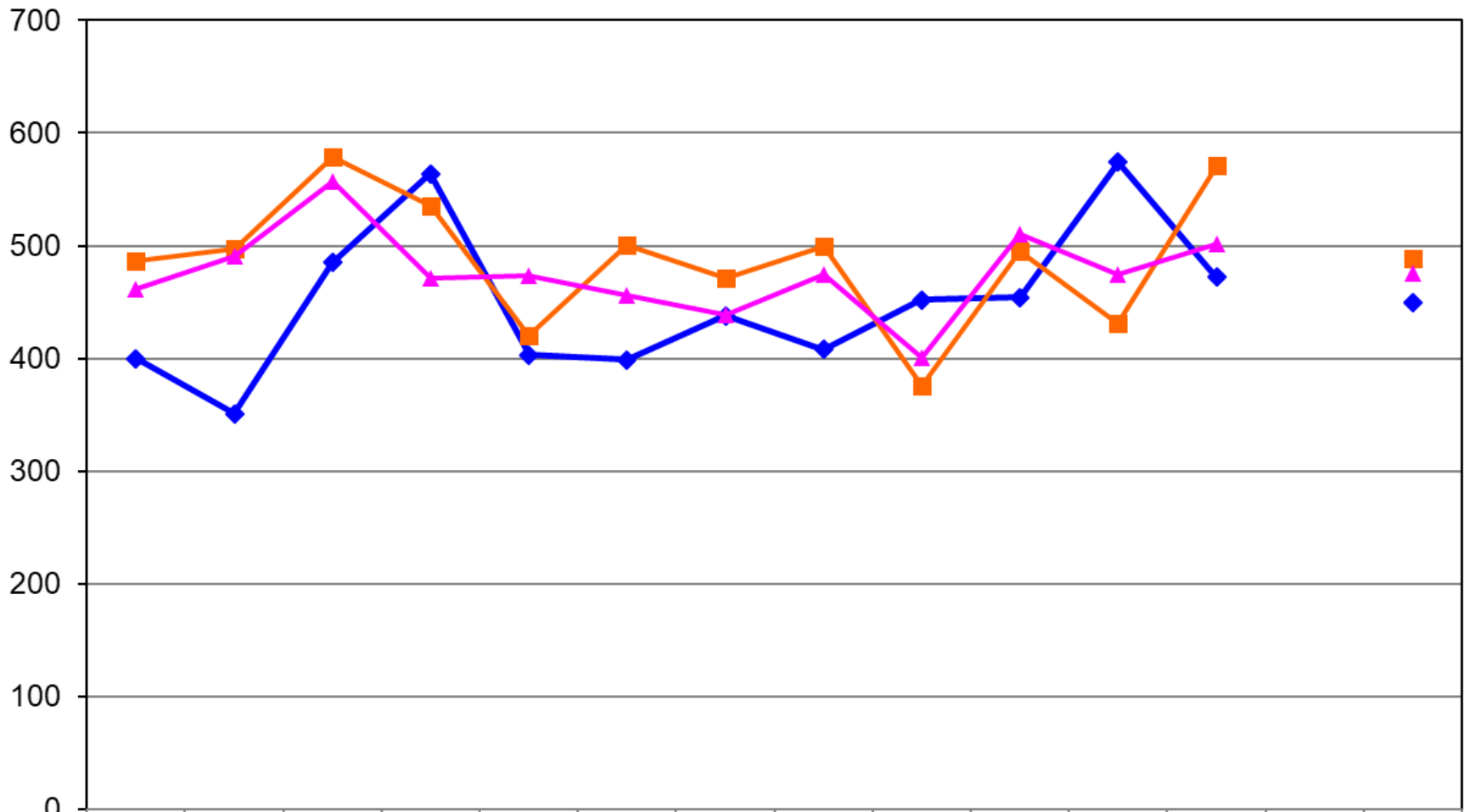
CFS Regions

2015/16 to 2017/18



	Apr	May	Jun	Jul	Aug	Sep	Oct	Nov	Dec	Jan	Feb	Mar		Avg
2015/16	1,069	1,116	1,275	1,095	966	1,029	1,197	1,196	1,041	1,220	1,241	1,272		1,143
2016/17	1,197	1,323	1,197	946	964	1,125	1,128	1,199	1,099	1,239	1,129	1,275		1,152
2017/18	1,052	1,292	1,208	952	1,020	1,073	1,199	1,244	1,004	1,186	1,109	1,238		1,131

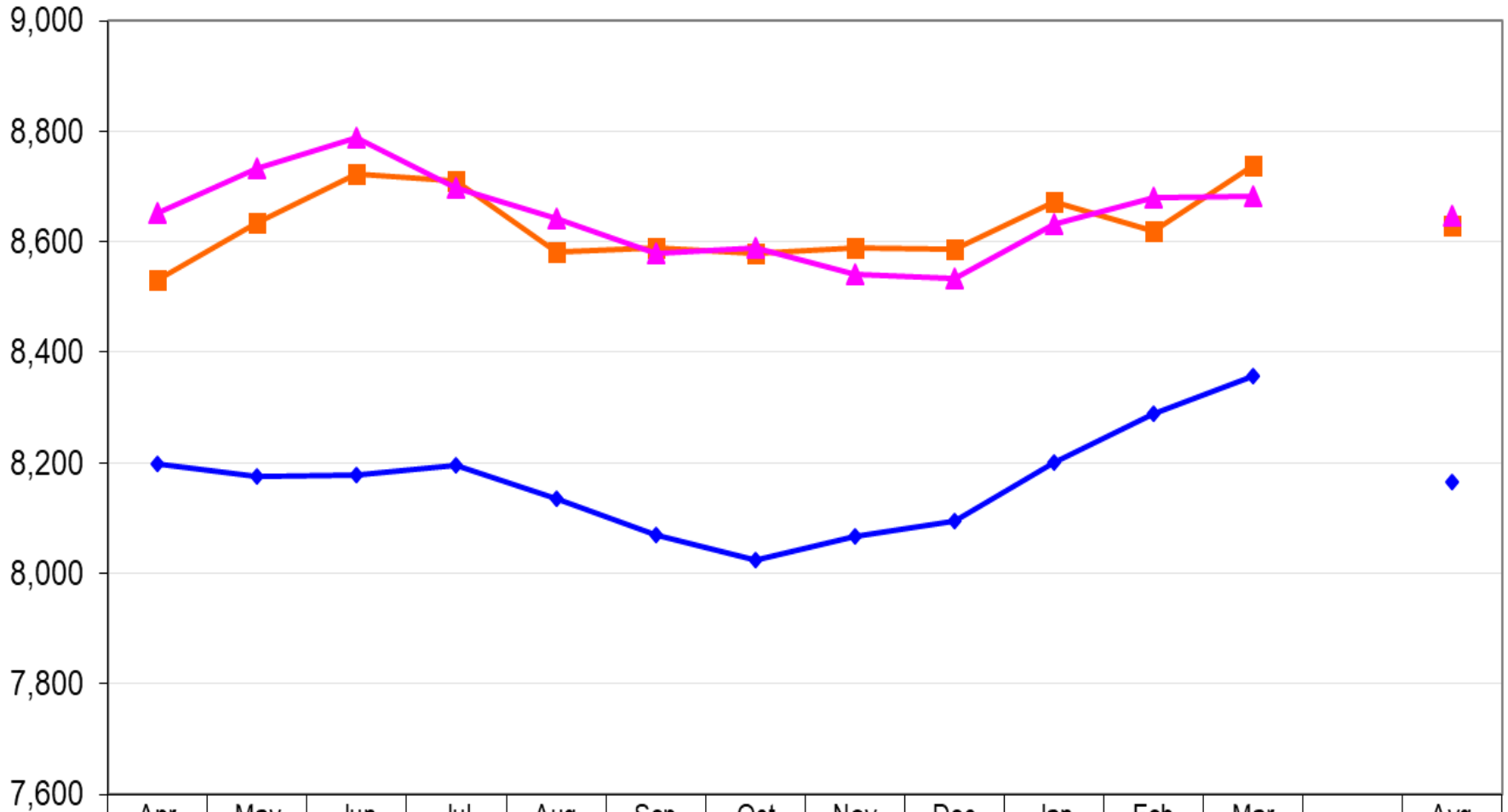
## New Case Opens CFS Regions 2015/16 - 2017/18



	Apr	May	Jun	Jul	Aug	Sep	Oct	Nov	Dec	Jan	Feb	Mar		Avg
◆ 2015/16	400	351	485	564	403	399	438	408	452	454	574	472		450
■ 2016/17	486	497	579	535	420	501	471	499	376	495	431	571		488
▲ 2017/18	461	491	557	471	474	456	439	475	401	510	475	502		476

# Child Intervention Caseload

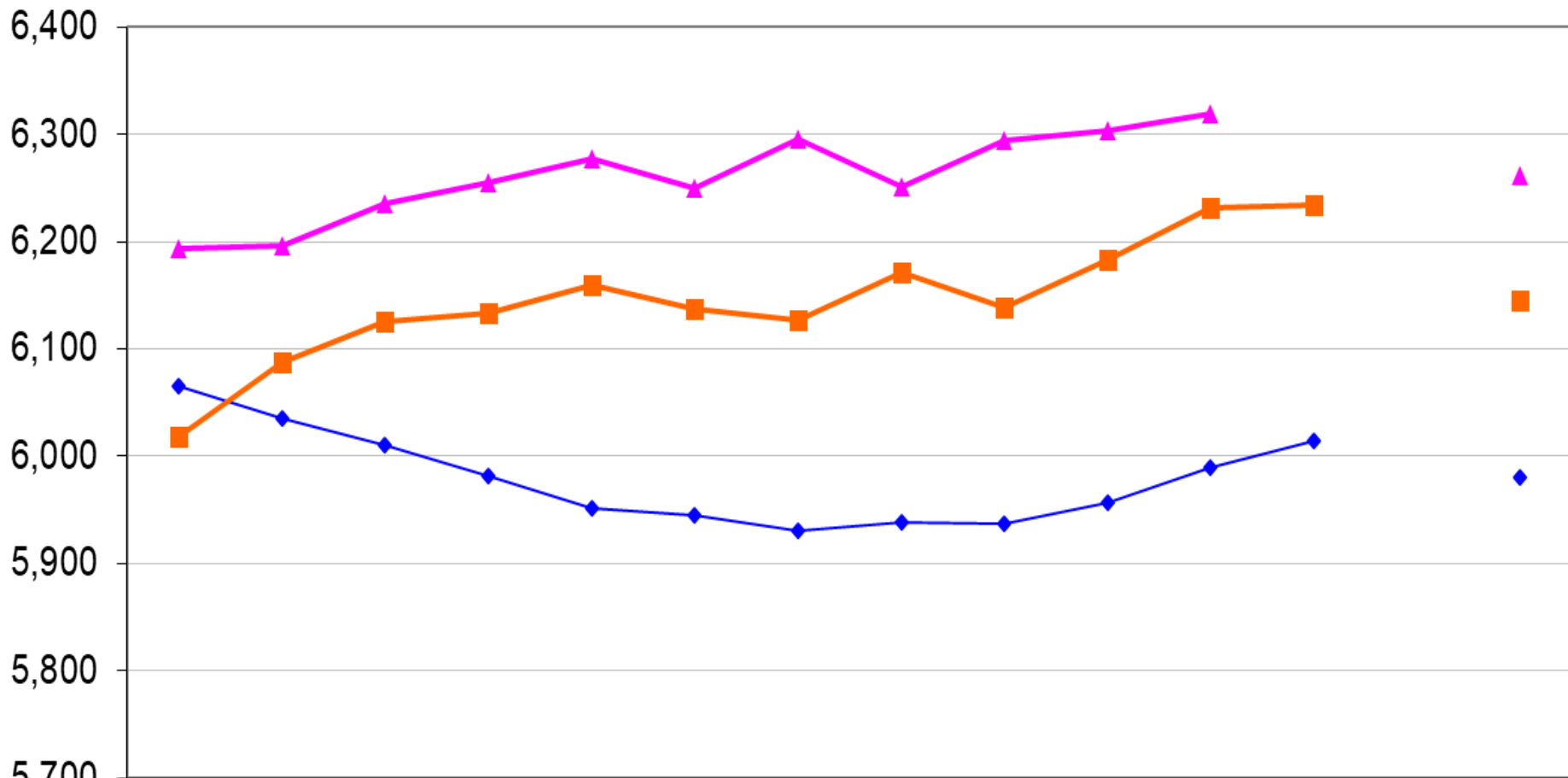
CFS Regions  
(Children 0-17 years of age)  
**2015/16 - 2017/18**



	Apr	May	Jun	Jul	Aug	Sep	Oct	Nov	Dec	Jan	Feb	Mar		Avg
2015/16	8,199	8,176	8,178	8,196	8,136	8,070	8,023	8,066	8,095	8,201	8,289	8,358		8,166
2016/17	8,532	8,634	8,723	8,710	8,582	8,590	8,579	8,589	8,587	8,672	8,620	8,738		8,630
2017/18	8,653	8,733	8,789	8,698	8,642	8,580	8,588	8,541	8,533	8,632	8,679	8,682		8,646

# Child Protection Caseload

## CFS Regions 2015/16 to 2017/18



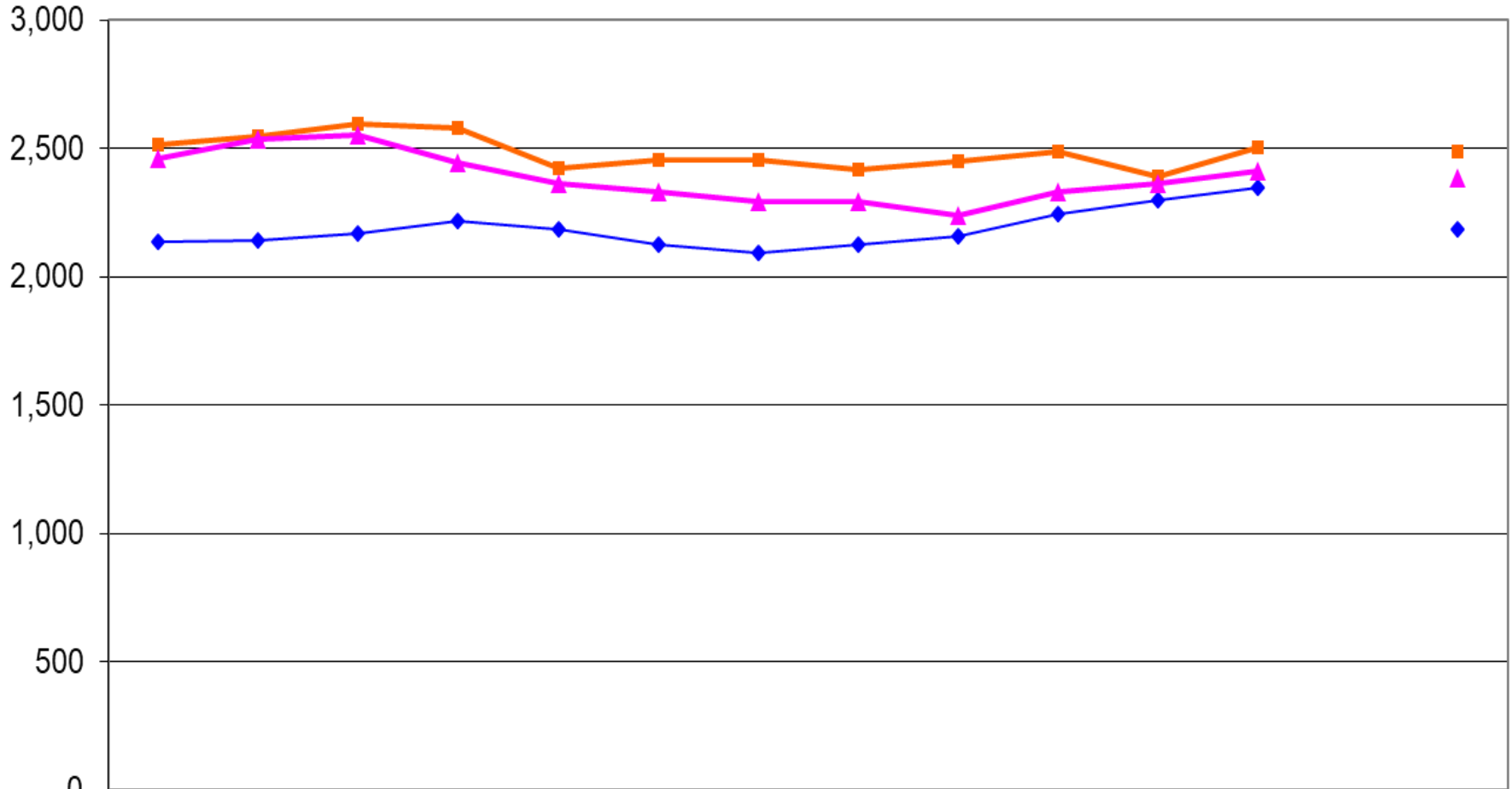
◆ 2015/16	6,066	6,035	6,010	5,982	5,952	5,945	5,931	5,939	5,937	5,957	5,989	6,014		5,980
■ 2016/17	6,018	6,087	6,126	6,133	6,160	6,138	6,127	6,172	6,139	6,183	6,231	6,234		6,146
▲ 2017/18	6,194	6,196	6,236	6,255	6,278	6,250	6,296	6,251	6,294	6,303	6,319			6,261

# Family Enhancement Caseload

CFS Regions

(Children & Youth 0-17 years old)

2015/16 to 2017/18

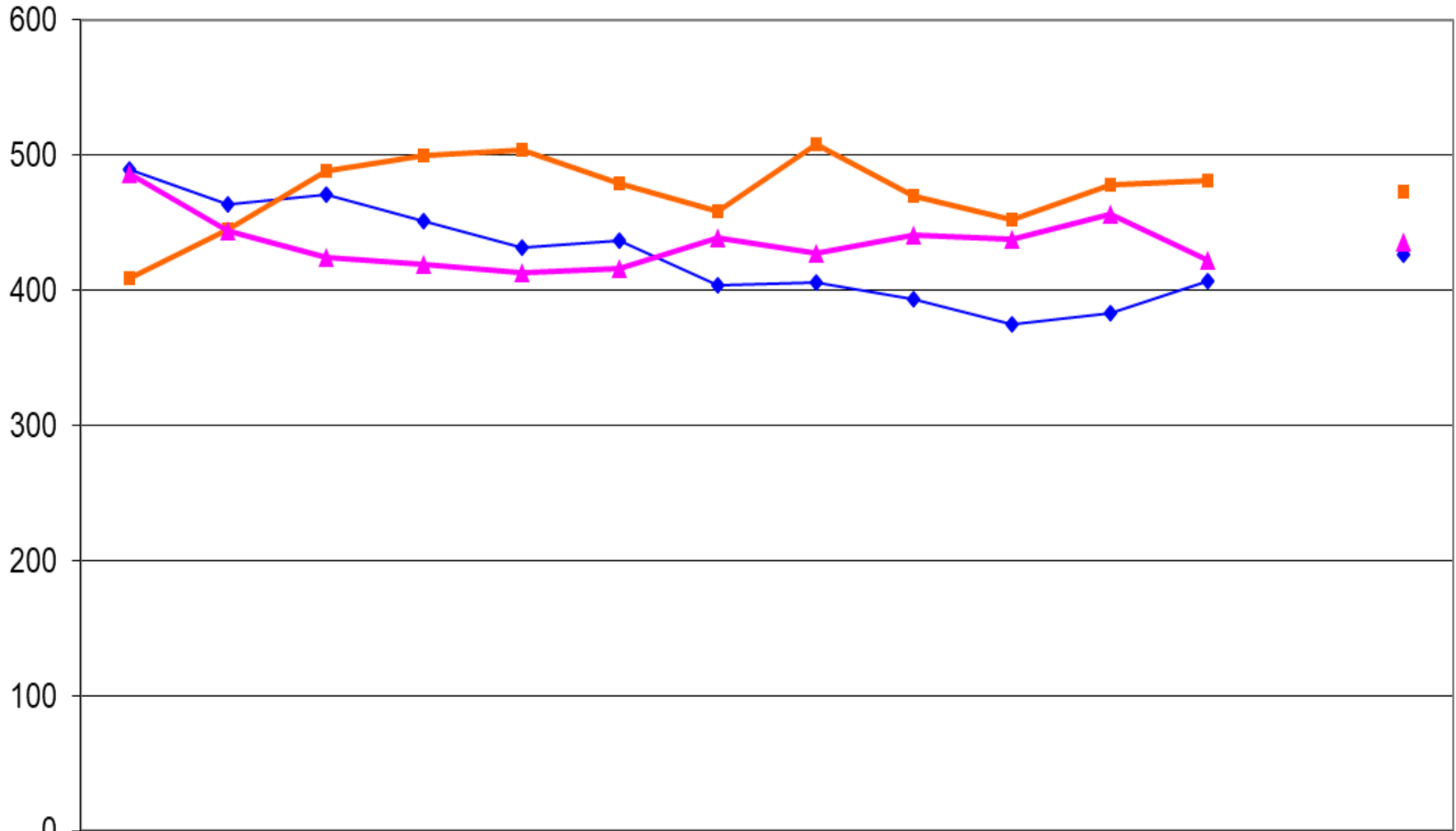


	Apr	May	Jun	Jul	Aug	Sep	Oct	Nov	Dec	Jan	Feb	Mar		Avg
◆ 2015/16	2,133	2,141	2,168	2,214	2,184	2,125	2,092	2,127	2,158	2,244	2,300	2,344		2,186
■ 2016/17	2,514	2,547	2,597	2,577	2,422	2,452	2,452	2,417	2,448	2,489	2,389	2,504		2,484
▲ 2017/18	2,459	2,537	2,553	2,443	2,364	2,330	2,292	2,290	2,239	2,329	2,360	2,411		2,384

# Supervision Order Caseload

CFS Regions

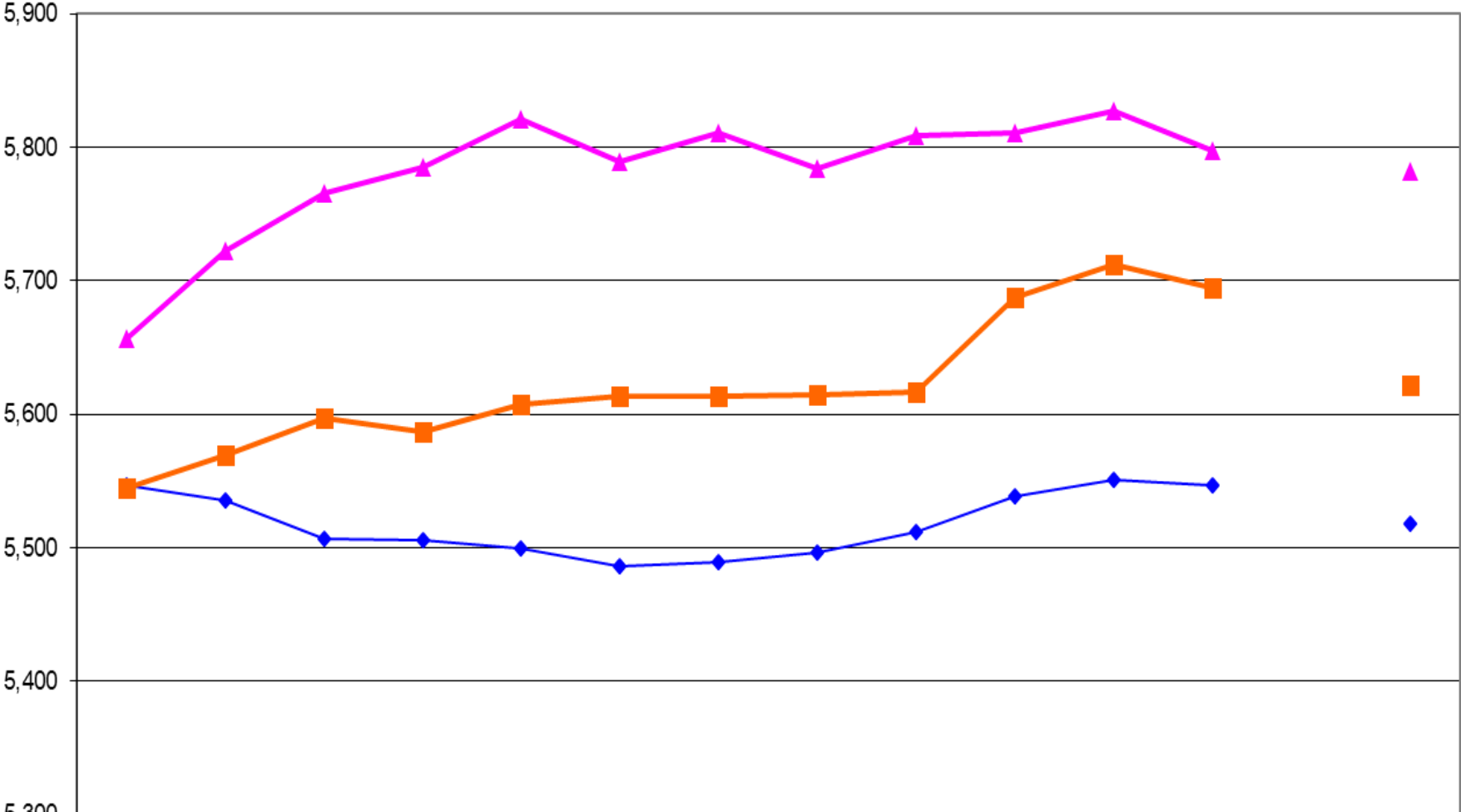
2015/16 to 2017/18



	Apr	May	Jun	Jul	Aug	Sep	Oct	Nov	Dec	Jan	Feb	Mar		Avg
2015/16	489	463	471	451	431	437	403	406	393	375	383	407		426
2016/17	409	445	488	499	504	479	458	508	470	452	478	481		473
2017/18	486	444	424	419	413	416	439	427	441	438	456	422		435

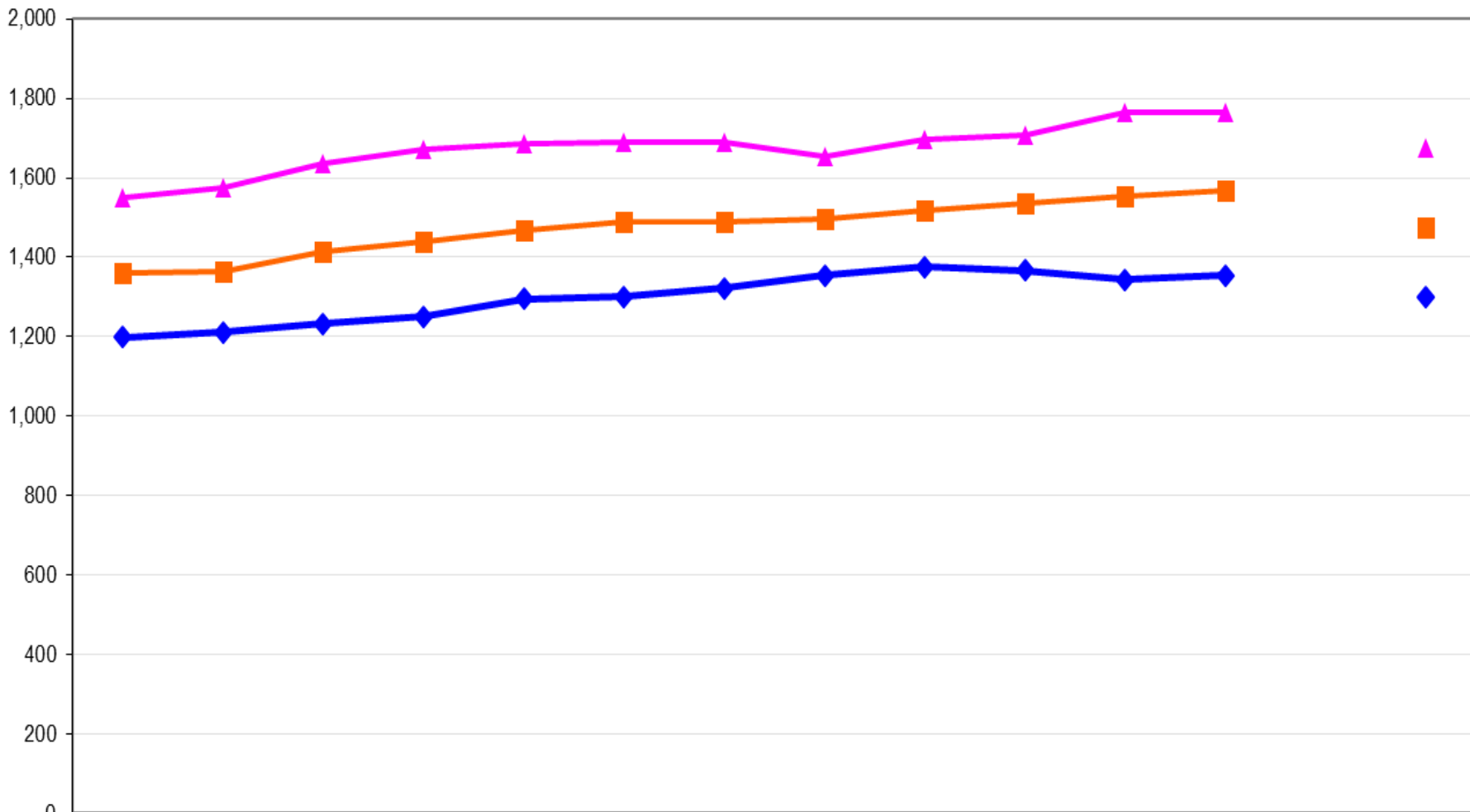


**In-care Caseload  
CFS Region  
2015/16 to 2017/18**



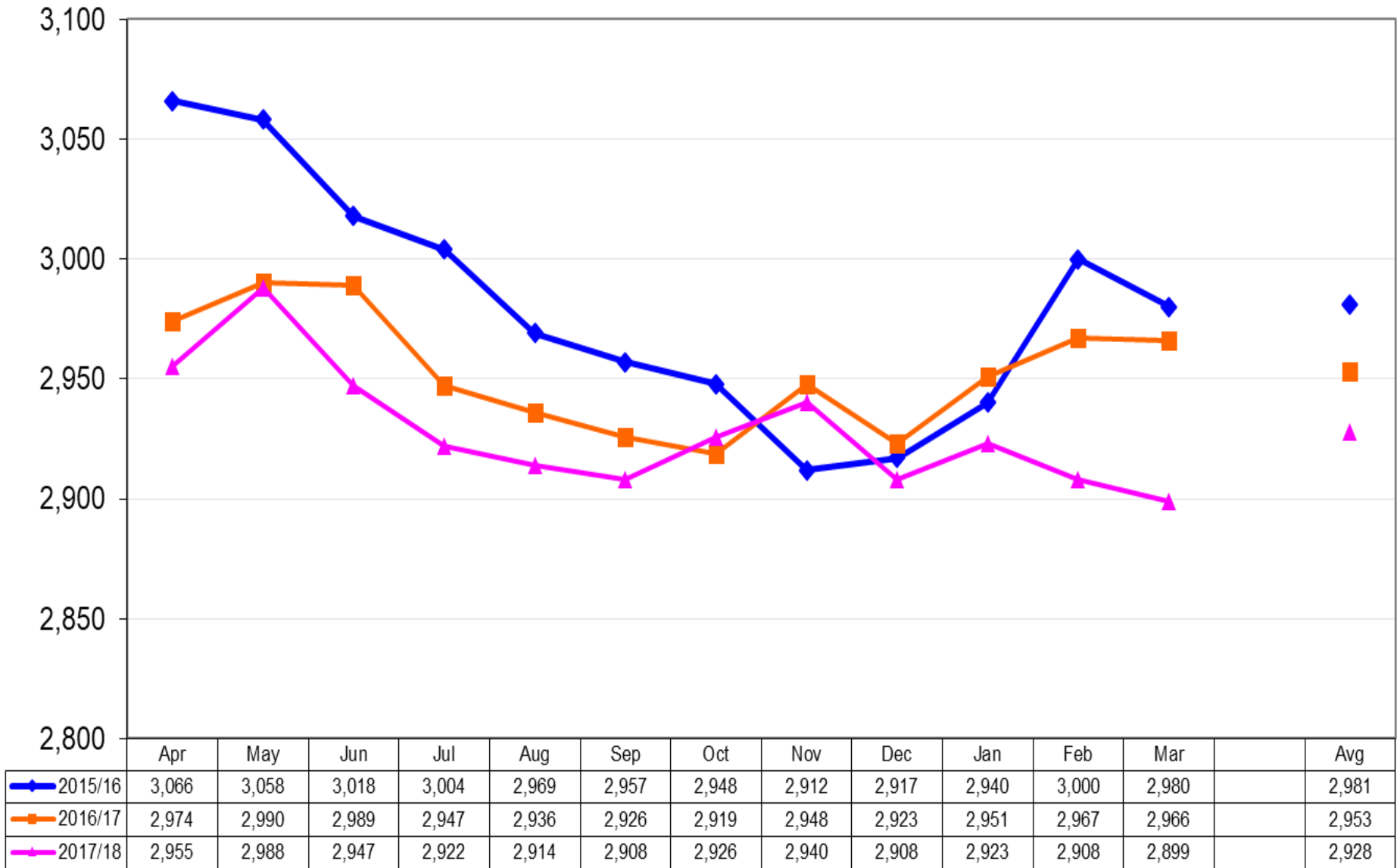
◆ 2015/16	5,547	5,536	5,507	5,506	5,500	5,486	5,489	5,496	5,512	5,539	5,551	5,547		5,518
■ 2016/17	5,545	5,569	5,597	5,587	5,607	5,614	5,614	5,615	5,617	5,688	5,712	5,695		5,622
▲ 2017/18	5,657	5,723	5,766	5,785	5,821	5,789	5,811	5,784	5,809	5,811	5,827	5,798		5,782

## Kinship Care CFS Regions 2015/16 to 2017/18

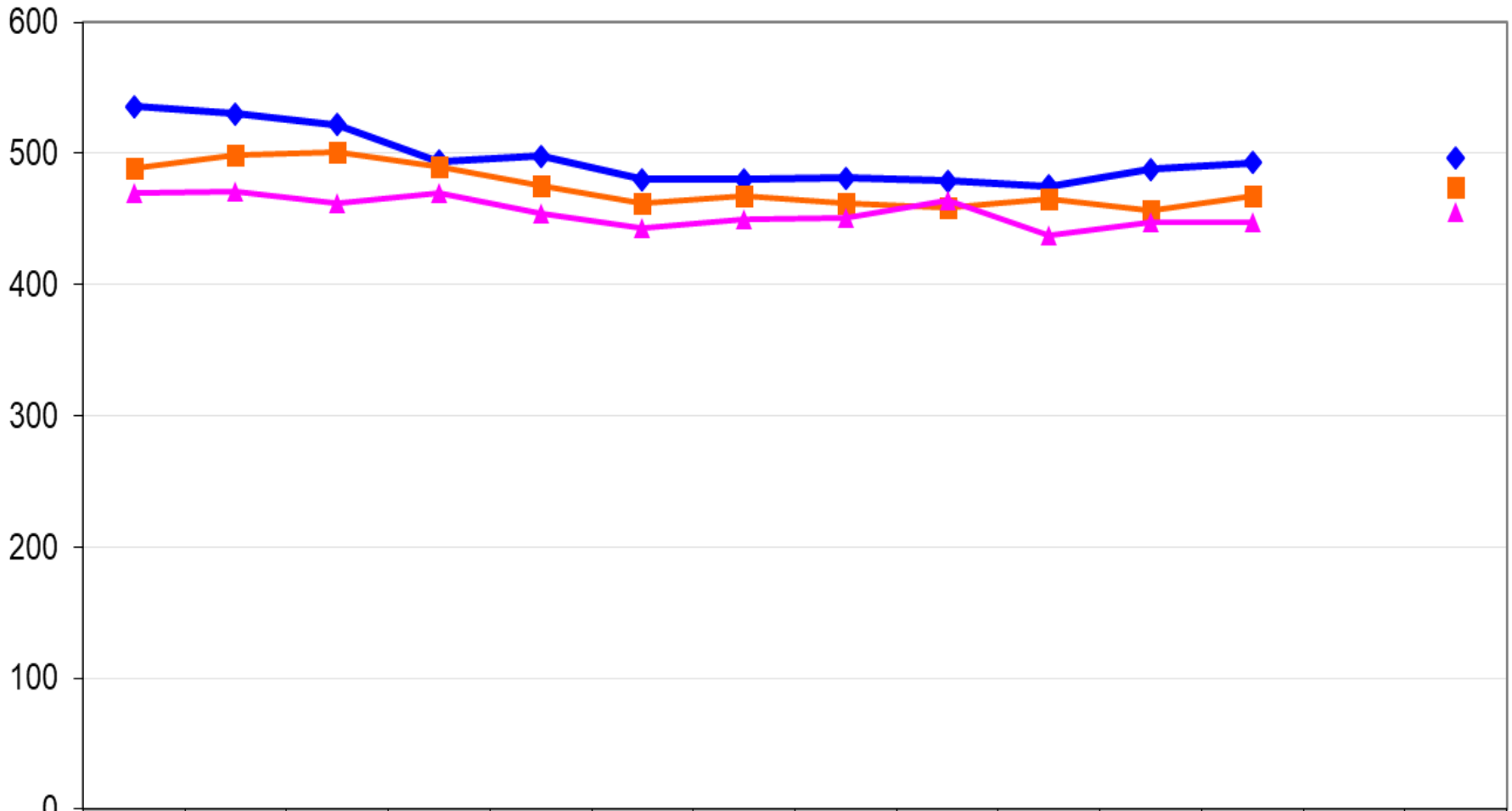


	Apr	May	Jun	Jul	Aug	Sep	Oct	Nov	Dec	Jan	Feb	Mar		Avg
◆ 2015/16	1,199	1,212	1,232	1,251	1,296	1,301	1,322	1,354	1,375	1,366	1,343	1,355		1,301
■ 2016/17	1,362	1,365	1,413	1,439	1,469	1,490	1,491	1,497	1,518	1,534	1,555	1,568		1,475
▲ 2017/18	1,550	1,574	1,637	1,672	1,685	1,688	1,691	1,655	1,698	1,708	1,764	1,763		1,674

## Foster Care CFS Regions 2015/16 to 2017/18



**Group / Residential Care**  
**CFS Regions**  
**2015/16 to 2017/18**

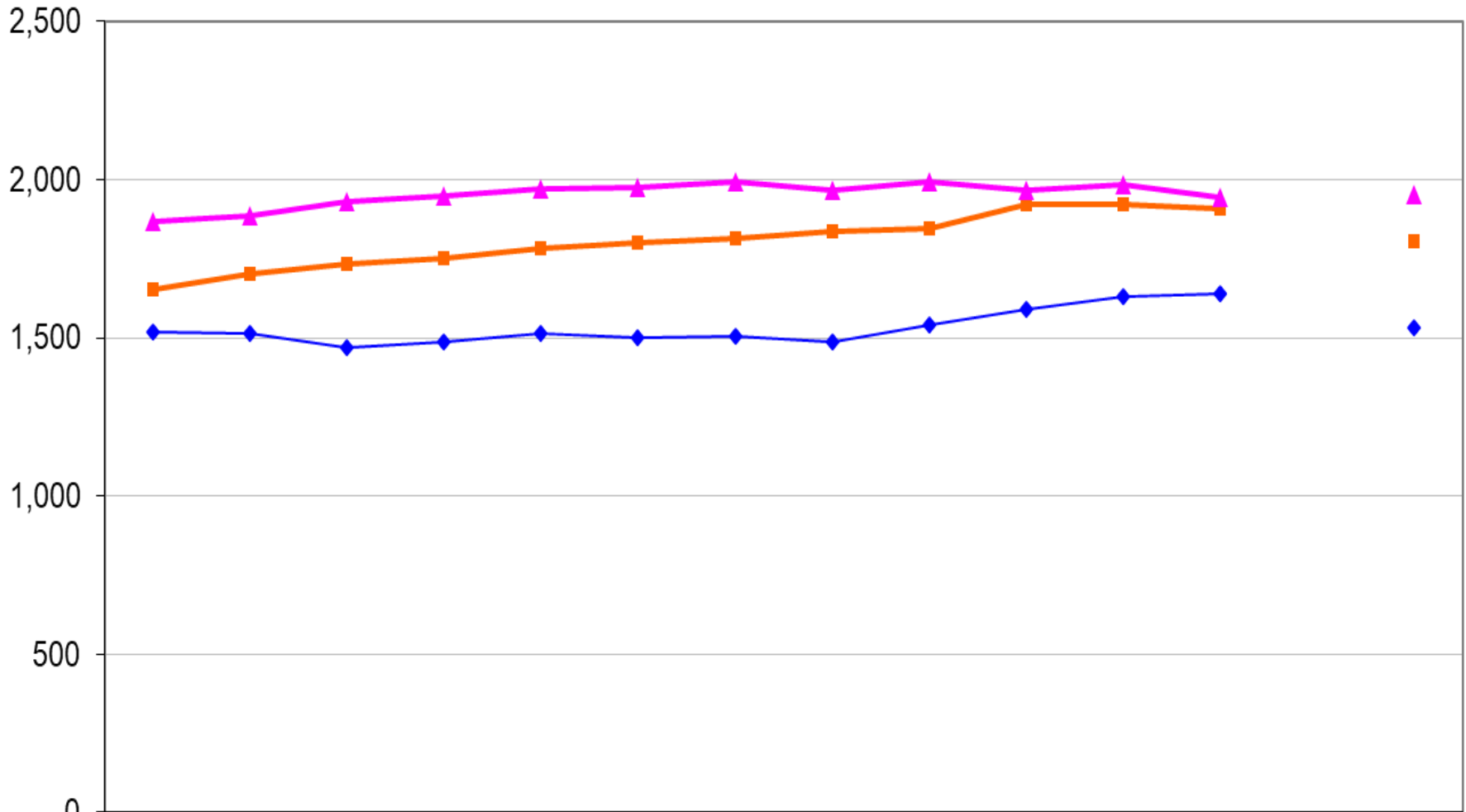


◆ 2015/16	536	530	522	494	498	480	480	481	479	475	488	493		496
■ 2016/17	489	499	501	490	475	462	468	462	459	465	457	468		475
▲ 2017/18	470	471	462	470	454	443	450	451	464	438	447	448		456

# Temporary Care Caseload

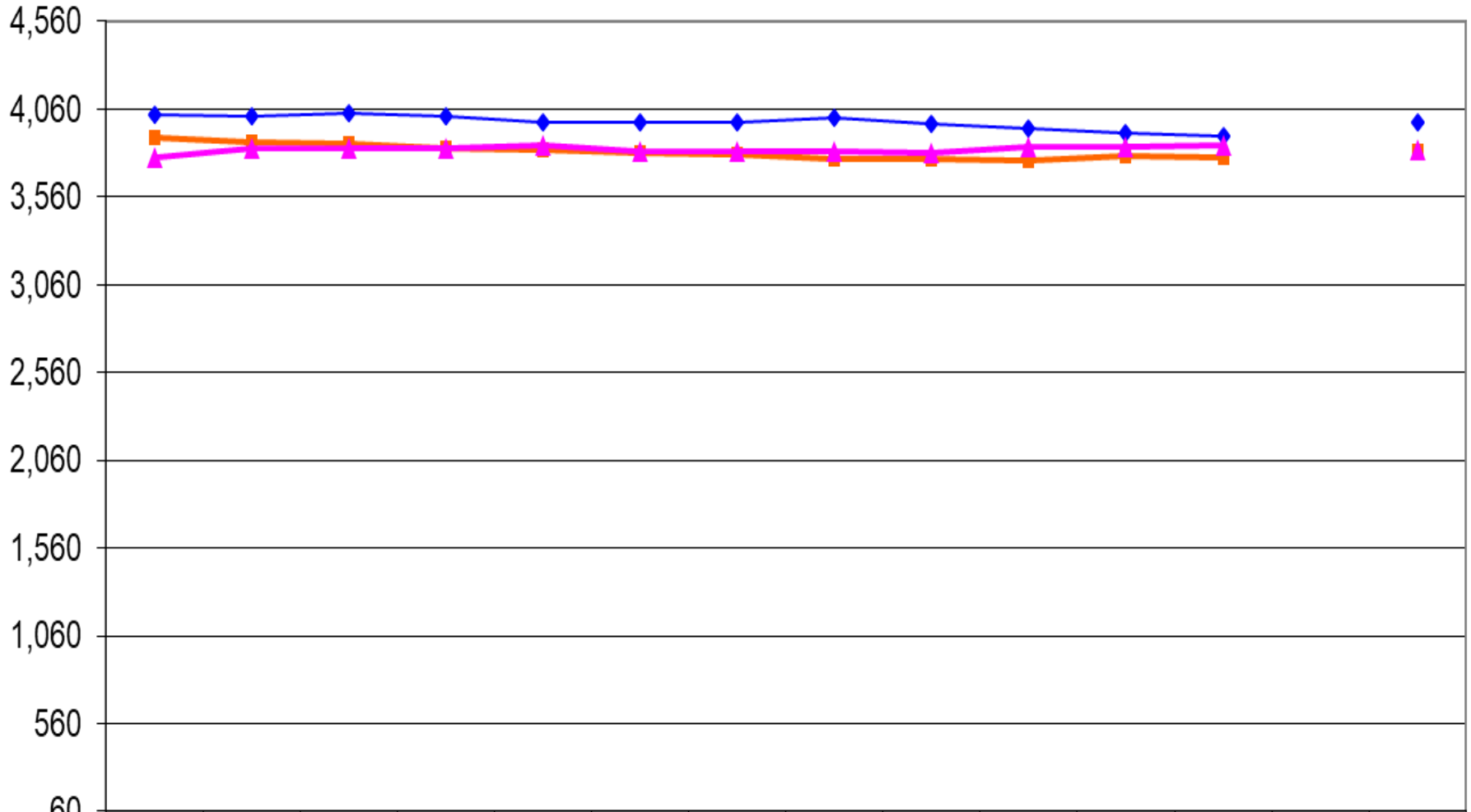
CFS Regions

2015/16 - 2017/18



	Apr	May	Jun	Jul	Aug	Sep	Oct	Nov	Dec	Jan	Feb	Mar		Avg
2015/16	1,518	1,515	1,468	1,489	1,513	1,500	1,506	1,485	1,540	1,588	1,631	1,639		1,533
2016/17	1,652	1,701	1,733	1,751	1,784	1,802	1,816	1,836	1,846	1,923	1,921	1,909		1,806
2017/18	1,869	1,886	1,930	1,947	1,972	1,973	1,993	1,965	1,995	1,964	1,985	1,942		1,952

**Permanent Care Caseload**  
**CFS Regions**  
**2015/16 - 2017/18**

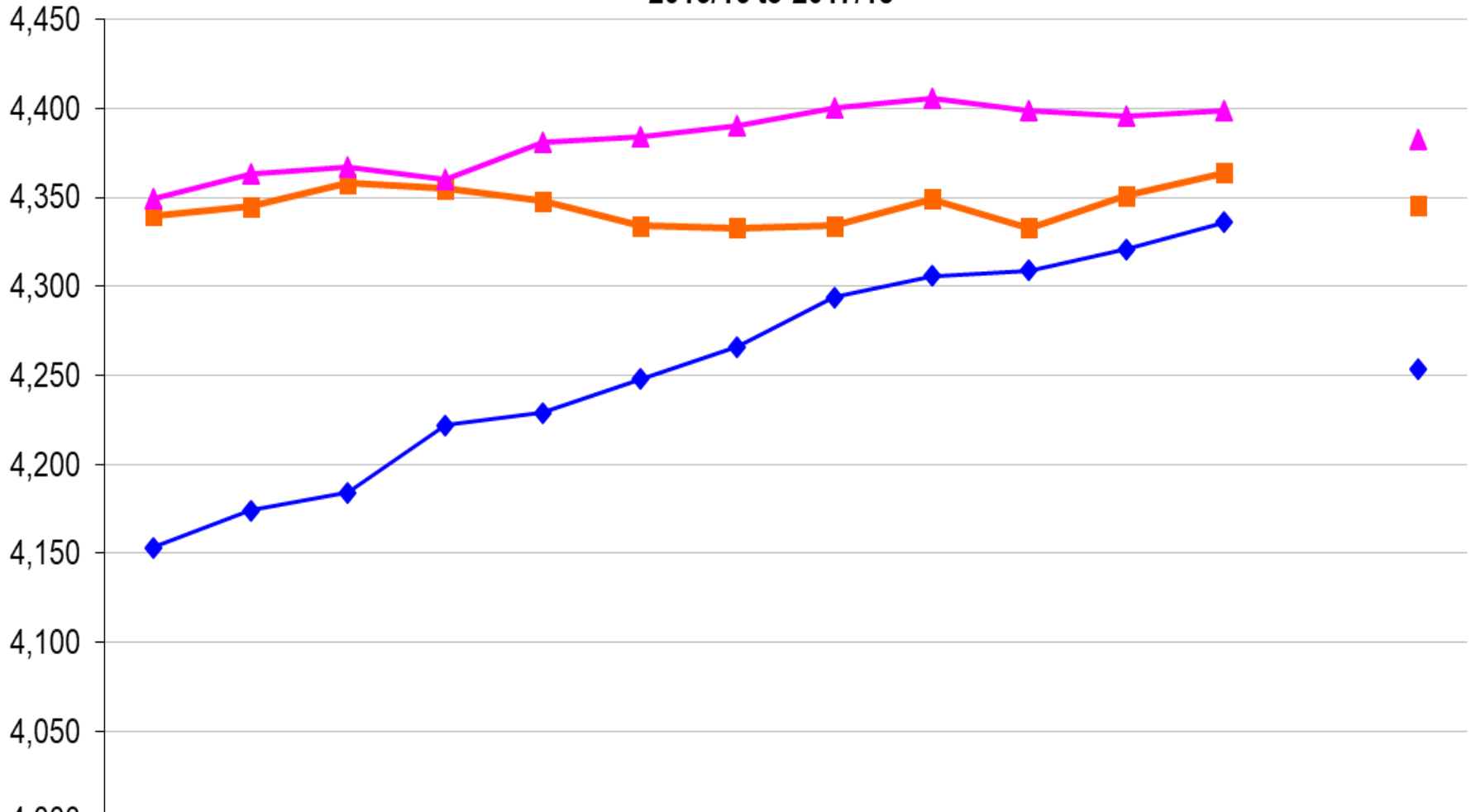


	Apr	May	Jun	Jul	Aug	Sep	Oct	Nov	Dec	Jan	Feb	Mar		Avg
2015/16	4,029	4,021	4,039	4,017	3,987	3,986	3,983	4,011	3,972	3,951	3,920	3,908		3,985
2016/17	3,893	3,868	3,864	3,836	3,823	3,812	3,798	3,779	3,771	3,765	3,791	3,786		3,816
2017/18	3,788	3,837	3,836	3,838	3,849	3,816	3,818	3,819	3,814	3,847	3,842	3,856		3,830

# Supports for Permanency Caseload

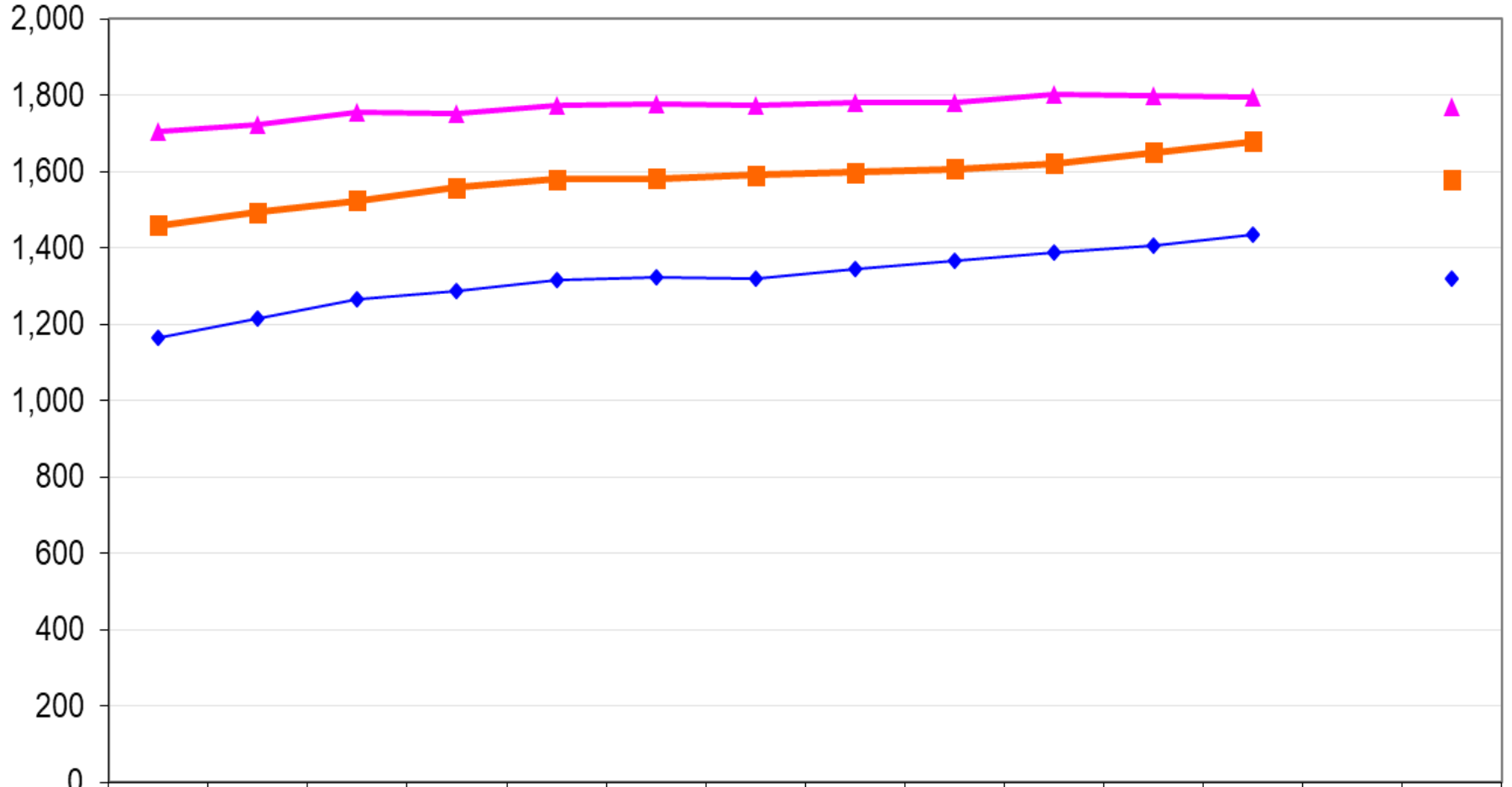
CFS Regions

2015/16 to 2017/18



◆ 2015/16	4,153	4,174	4,184	4,222	4,229	4,248	4,266	4,294	4,306	4,309	4,321	4,336		4,254
■ 2016/17	4,340	4,345	4,358	4,355	4,348	4,334	4,333	4,334	4,349	4,333	4,351	4,364		4,345
▲ 2017/18	4,349	4,363	4,367	4,360	4,381	4,384	4,390	4,400	4,406	4,399	4,396	4,399		4,383

**Post Child Intervention Caseload**  
**CFS Regions**  
 (Youth 18-23 years old)  
**2015/16 - 2017/18**



◆ 2015/16	1,165	1,213	1,264	1,288	1,315	1,321	1,319	1,343	1,365	1,387	1,407	1,435		1,319
■ 2016/17	1,458	1,492	1,524	1,558	1,580	1,582	1,590	1,598	1,607	1,621	1,649	1,679		1,578
▲ 2017/18	1,703	1,724	1,755	1,753	1,773	1,778	1,772	1,780	1,781	1,801	1,798	1,796		1,768



# Questions?

